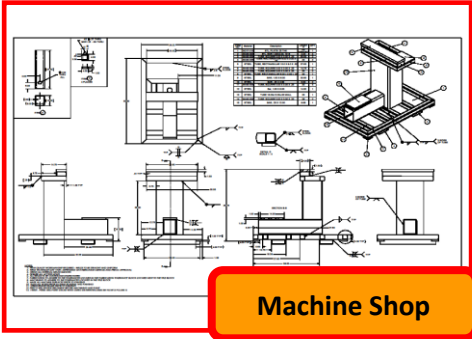


We Design and Build precision fixtures and automated equipment.

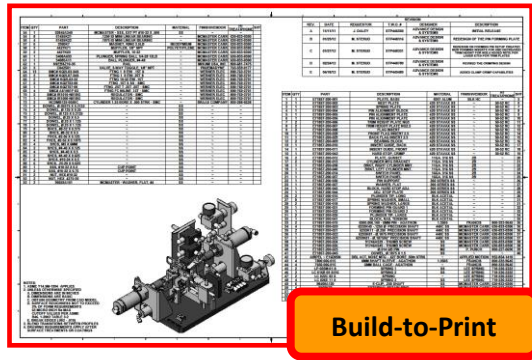
With a combination of creative mechanical and electrical engineering and in-house precision machining makes us a great solution to your fixturing and automation needs.



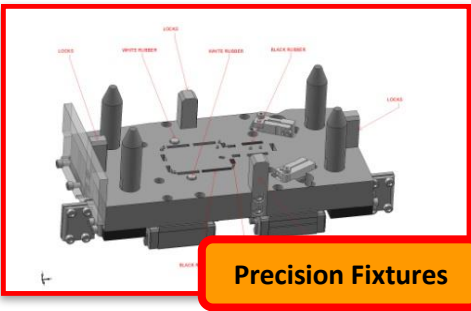
Machine Shop

If you design your own fixtures or systems, we can build them for you. ADS offers complete mechanical, electrical and programming of your products.

Precision fabrication capabilities include: milling, turning, welding, wire EDM, sinker EDM, silicone and plastic injection molds and inspection.



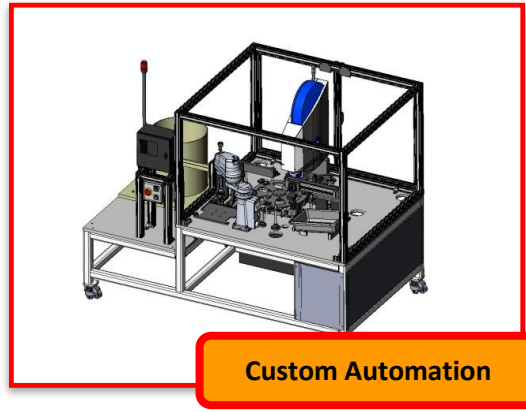
Build-to-Print



Precision Fixtures

Whether the process has been developed or you are looking to team up with Advance Design & Systems to establish the process, we know what steps to take to ensure the desired result you are looking for.

A great fixture is the KEY to successful manufacturing. Let our team of experts help you create a solution to meet all your requirements.



Custom Automation

Give us a call today and we will be able to assist you with all your Precision Fixtures and Automated Equipment

Advance Design & Systems



325 Airport Road NE | Pine City, MN 55063
Phone: (320) 629-6697 | Fax (320) 629-6973

info@advancedesign-sys.com
www.advancedesign-sys.com



Facility Listing

Software

Mechanical Design
SolidWorks w/Cosmos
Siemens NX

Electrical Design
AutoCAD

CAM
MasterCAM for Mill & Lathe
Esprit SolidWire Gold

Inspection

Hexagon 4.5.4 SF CMM
14.0" x 20.2" x 13.9"
PC-DNIS CAD

OGP SmartScope Flash 200
X=8", Y=8", Z=6"
Optical Inspection

Turning

Hardinge Talent 8/52
10" Ø X 12" Length

Hardinge Conquest 42
7.5" Ø X 9" Length

Hardinge Tool Room
6.5" Ø X 16" Length

HAAS TL-2
10" Ø X 48" Length

Milling

Hardinge 480 (2X)
X=18", Y=15", Z=16"

Hardinge 760 (2X)
X=30", Y=24", Z=24"

Hardinge 760
X=30", Y=24", Z=24"

Hardinge XR500
X=19.7, Y=15.7", Z=15.7"

Bridgeport Mill (2X)
X=25", Y=12.5

Bridgeport EZ Trak Mill (2X)
X=30", Y=12.5" Quill

Milltronics RH33 Bed Mill
X=78", Y=33", Z=28"

EDM

Mitsubishi EA8 Sinker
Machine Travel: X=11.8", Y=9.8", Z=9.8"
Tank Size: W=30.3", D=19.7", H=9.8"

Mitsubishi FA10PS Wire
Machine Travel: X=13.8", Y=9.8", Z=8.6"
Max. Work Size: W=31.5", D=23.6", H=8.5"

Grinding

Clausing CSG-1020ASDII
10" x 20" Capacity

Mitsui
6" x 12" Capacity

Mitsui
8" x 18" Capacity

Welding

Miller Syncrowave 200
Tig (GTAW) & Stick (SMAW)

Millermatic 350P
Mig (GMAW) & Flux Core (FCAW)



Advance Design & Systems

325 Airport Road NW, Pine City, MN 55063

Phone: (320) 629-6697 | Fax: (320) 629-6973

www.advancedesign-sys.com